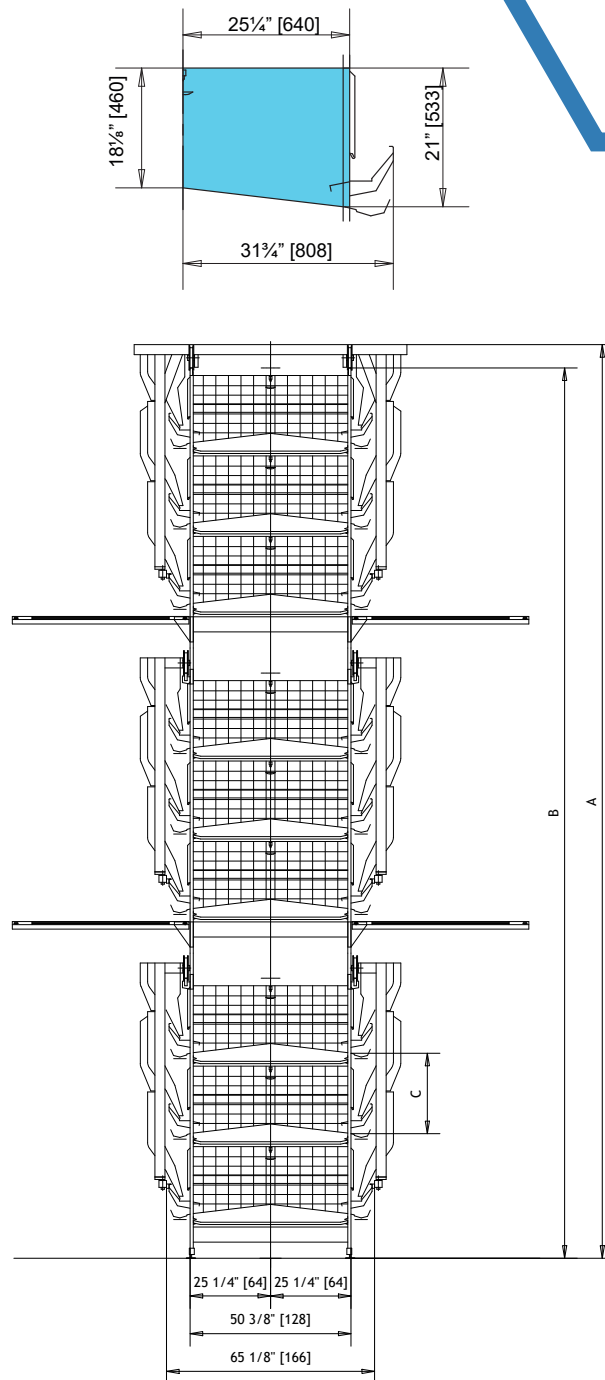
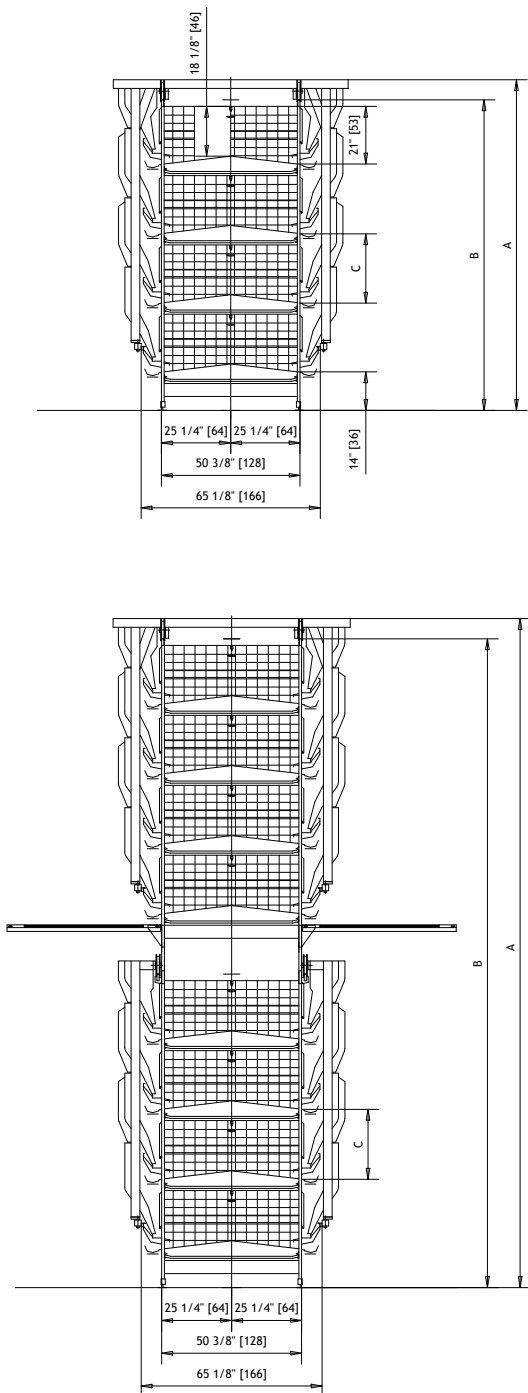


PLUS 64

Conventional System for Layers



A = cages height with feeding **trolley**

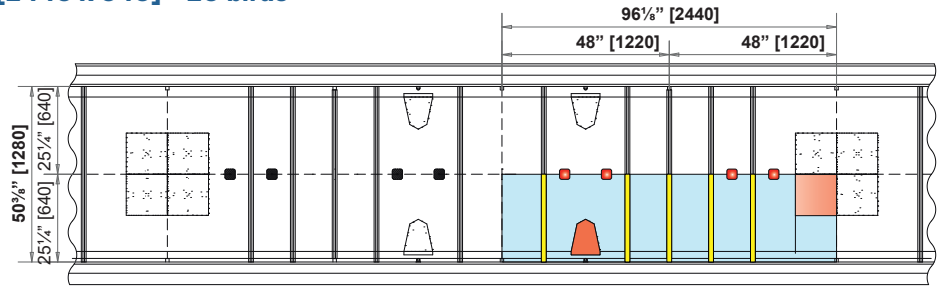
B = cages height with **chain** feeding

C = tier distance:

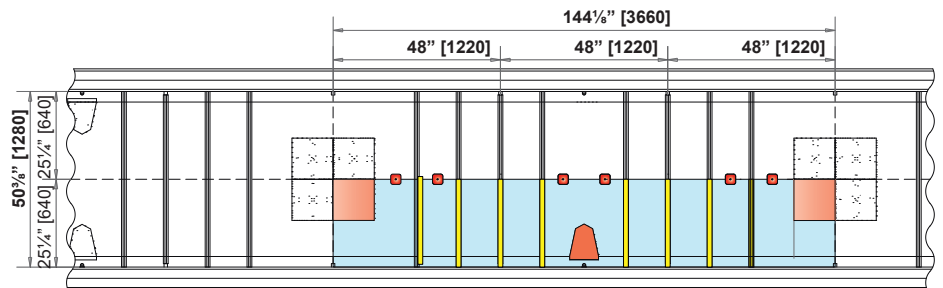
25 1/4" [640 mm] senza sistema di soffiaggio pollina/without drying manure system

26 3/8" [680 mm] con sistema di soffiaggio pollina/with drying manure system

Box 96¹/₈" x 25¹/₄" [2440 x 640] - 20 birds



Box 144¹/₈" x 25¹/₄" [3660 x 640]- 30 birds



- box surface
- nest bottom
- perches
- nipples
- scratching area

BATTERY HEIGHT

PLUS 64	WITH DRYING SYSTEM		WITHOUT DRYING SYSTEM	
	Tier distance 26 ³ / ₄ " [680] (C)		Tier distance 25 ¹ / ₄ " [640] (C)	
Width 65 ¹ / ₈ " [1655 mm]	FLAT CHAIN (B)	TROLLEY (A)	FLAT CHAIN (B)	TROLLEY (A)
3 Tiers	91,66 [2328]	98,98 [2514]	87,72 [2228]	95,04 [2414]
4 Tiers	118,43 [3008]	125,75 [3194]	112,92 [2868]	120,24 [3054]
5 Tiers	145,20 [3688]	152,52 [3874]	138,12 [3508]	145,44 [3694]
6 Tiers	171,97 [4368]	179,30 [4554]	163,31 [4148]	170,63 [4334]
7 Tiers	198,75 [5048]	206,07 [5234]	188,51 [4788]	195,83 [4974]
6 Tiers + walkway (3+3)	194,69 [4945]	201,97 [5130]	187,01 [4750]	194,34 [4936]
7 Tiers + walkway (4+3)	221,46 [5625]	228,75 [5810]	212,21 [5390]	219,53 [5576]
8 Tiers + walkway (4+4)	248,23 [6305]	255,52 [6490]	237,41 [6030]	244,73 [6216]
9 Tiers + walkway (5+4)	275,00 [6985]	282,29 [7170]	262,60 [6670]	269,93 [6856]
10 Tiers + walkway (5+5)	301,78 [7665]	309,06 [7850]	287,80 [7310]	295,12 [7496]
11 Tiers + walkway (6+5)	328,55 [8345]	335,83 [8530]	313,00 [7950]	320,32 [8136]
12 Tiers + walkway (6+6)	355,32 [9025]	362,60 [9210]	338,19 [8590]	345,52 [8776]
9 Tiers + 2 walkways (3+3+3)	292,25 [7423]	299,57 [7609]	286,30 [7272]	293,63 [7458]
10 Tiers + 2 walkways (4+3+3)	319,02 [8103]	326,34 [8289]	311,74 [7918]	318,82 [8098]
11 Tiers + 2 walkways (4+4+3)	345,79 [8783]	352,92 [8964]	336,70 [8552]	344,02 [8738]
12 Tiers + 2 walkways (4+4+4)	372,56 [9463]	379,89 [9649]	361,89 [9192]	369,22 [9378]



Scan the QR code to find more.

Contact your Tecno representative or visit our website for more information.

poultryequipment.com