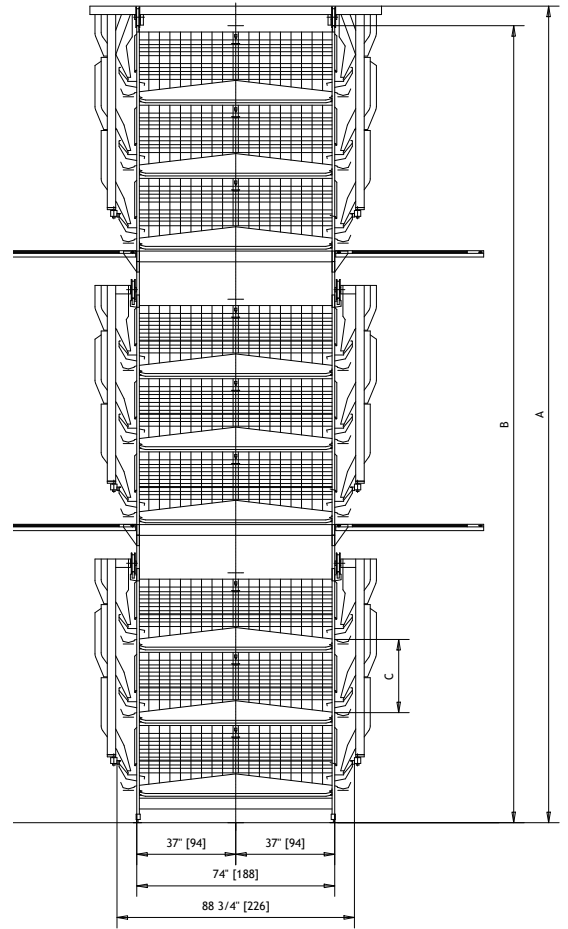
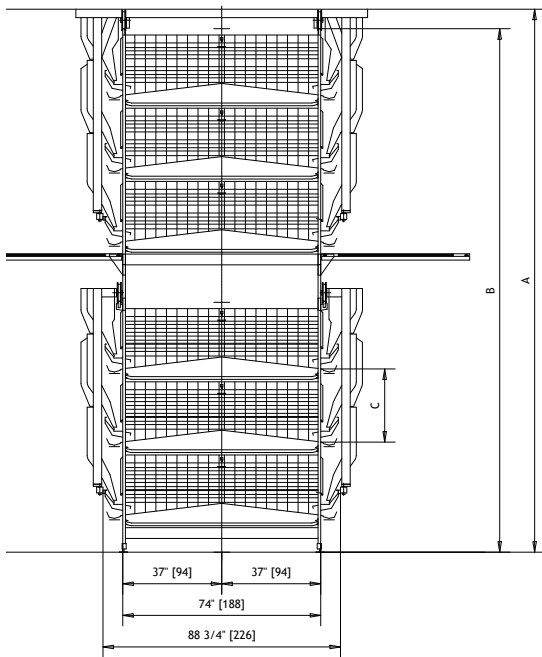
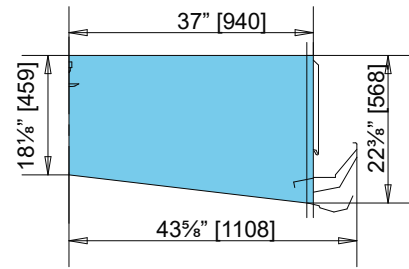
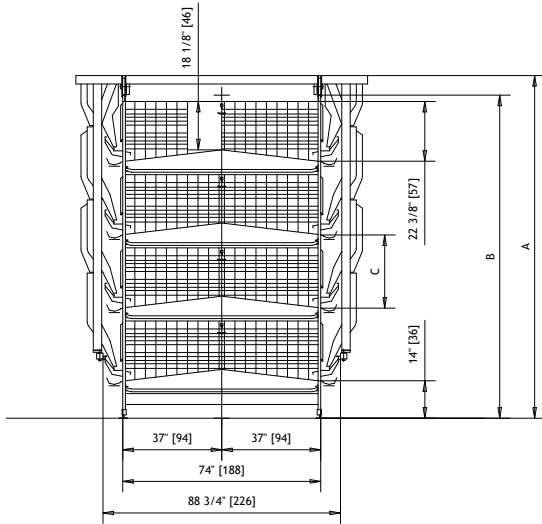


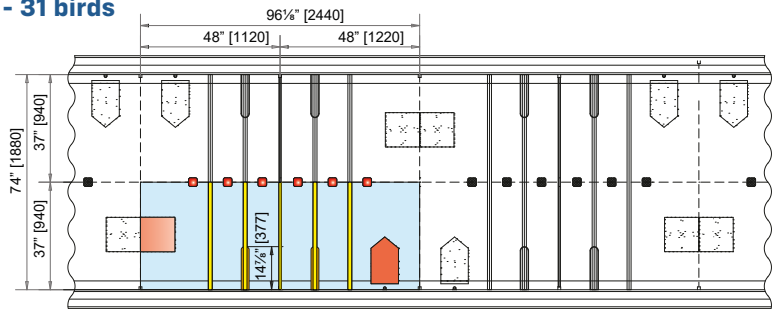
PLUS 94

Conventional System for Layers

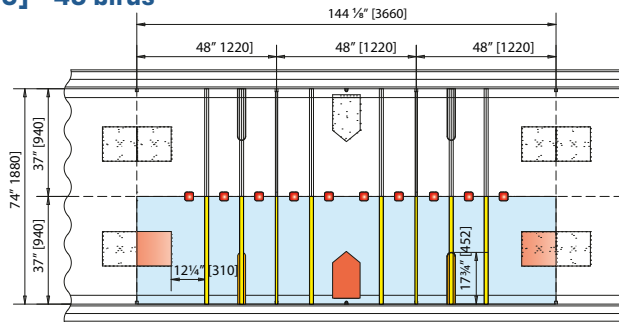


- A** = cages height with feeding **trolley**
- B** = cages height with **chain** feeding
- C** = tier distance: 27 3/8" [695 mm] with and without drying manure system

Box 96 1/8" x 37" [2440x940] - 31 birds



Box 144 1/8" x 37" [3660 x 940] - 45 birds



- box surface
- nest bottom
- perches
- nipples
- scratching area

BATTERY HEIGHT

PLUS 94	WITH DRYING SYSTEM		WITHOUT DRYING SYSTEM	
	Tier distance 27 3/8" [695mm] (C)		Tier distance 27 3/8" [695mm] (C)	
Width 88 3/4" [2255 mm]	FLAT CHAIN (B)	TROLLEY (A)	FLAT CHAIN (B)	TROLLEY (A)
3 Tiers	93,43 [2373]	100,79 [2560]	93,43 [2373]	100,79 [2560]
4 Tiers	120,79 [3068]	128,15 [3255]	120,79 [3068]	128,15 [3255]
5 Tiers	148,15 [3763]	155,52 [3950]	148,15 [3763]	155,52 [3950]
6 Tiers	175,52 [4458]	182,88 [4645]	175,52 [4458]	182,88 [4645]
7 Tiers	202,88 [5153]	210,24 [5340]	202,88 [5153]	210,24 [5340]
6 Tiers + walkway (3+3)	195,48 [4965]	202,76 [5150]	195,48 [4965]	202,76 [5150]
7 Tiers + walkway (4+3)	222,84 [5660]	230,12 [5845]	222,84 [5660]	230,12 [5845]
8 Tiers + walkway (4+4)	250,20 [6355]	257,49 [6540]	250,20 [6355]	257,49 [6540]
9 Tiers + walkway (5+4)	277,56 [7050]	284,85 [7235]	277,56 [7050]	284,85 [7235]
10 Tiers + walkway (5+5)	304,93 [7745]	312,21 [7930]	304,93 [7745]	312,21 [7930]
11 Tiers + walkway (6+5)	332,29 [8440]	339,57 [8625]	332,29 [8440]	339,57 [8625]
12 Tiers + walkway (6+6)	359,66 [9135]	366,94 [9320]	359,66 [9135]	366,94 [9320]
9 Tiers + 2 walkways (3+3+3)	269,21 [7533]	276,53 [7719]	269,21 [7533]	276,53 [7719]
10 Tiers + 2 walkways (4+3+3)	296,58 [8228]	303,90 [8414]	296,58 [8228]	303,90 [8414]
11 Tiers + 2 walkways (4+4+3)	323,94 [8923]	331,26 [9109]	323,94 [8923]	331,26 [9109]
12 Tiers + 2 walkways (4+4+4)	351,30 [9618]	358,63 [9804]	351,30 [9618]	358,63 [9804]



Scan the QR code to find more.

Contact your Tecno representative or visit poultryequipment.com for more information.