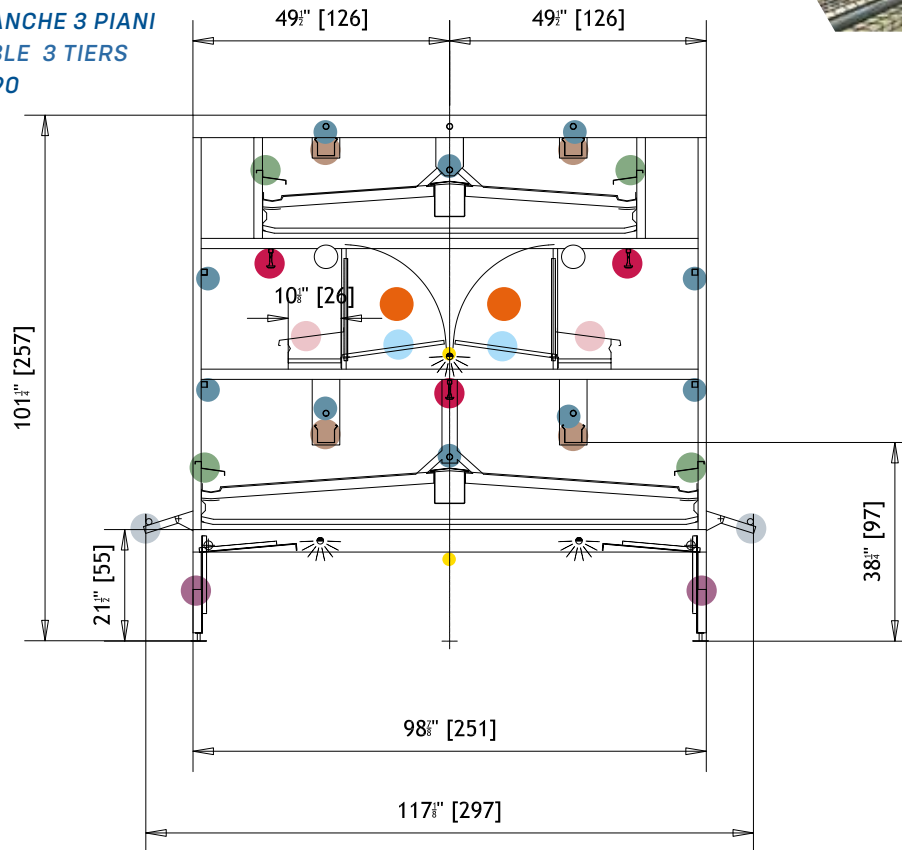


AS S250






Aviary System for Layers



***DISPONIBILE ANCHE 3 PIANI**
ALSO AVAILABLE 3 TIERS
AS 250-190-190



-  **Astroturf removibile e autopulente**
Removable and self-cleaning astroturf
-  **Copertura in acciaio inox di protezione nastro uova largo 25 o 35 cm**
Stainless steel protection cover over 25 or 35 cm wide egg belt
-  **Mangiatoie dotate di profilo antispreco**
Feed trough with anti-waste profile
-  **Trespole mobile (può essere usato per l'ispezione)**
Movable perch (can be used for inspection)
-  **Nido con apertura automatica**
Nest with automatic movement for ejection

-  **Sportello automatico/manuale**
Automatic/manual door
-  **Linea di abbeveraggio**
Drinking line
-  **Bandina/Trespole protezione uova in acciaio inox**
Egg protection profile/perch in stainless steel
-  **Trespole**
Perch
-  **Illuminazione a Led**
Led lighting

VANTAGGI

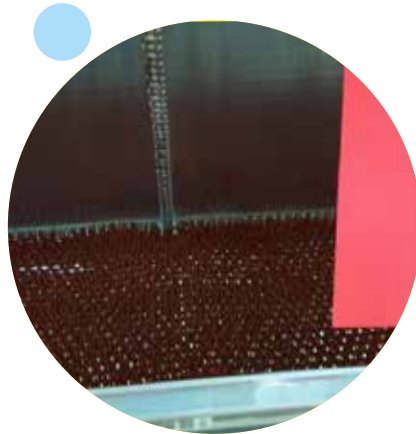
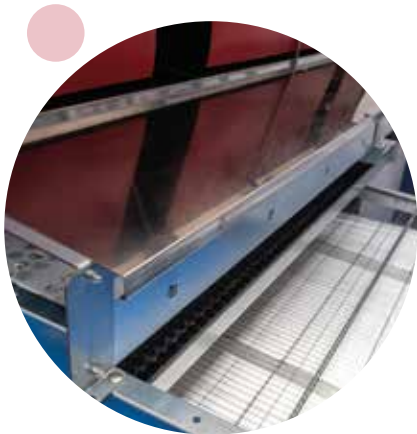
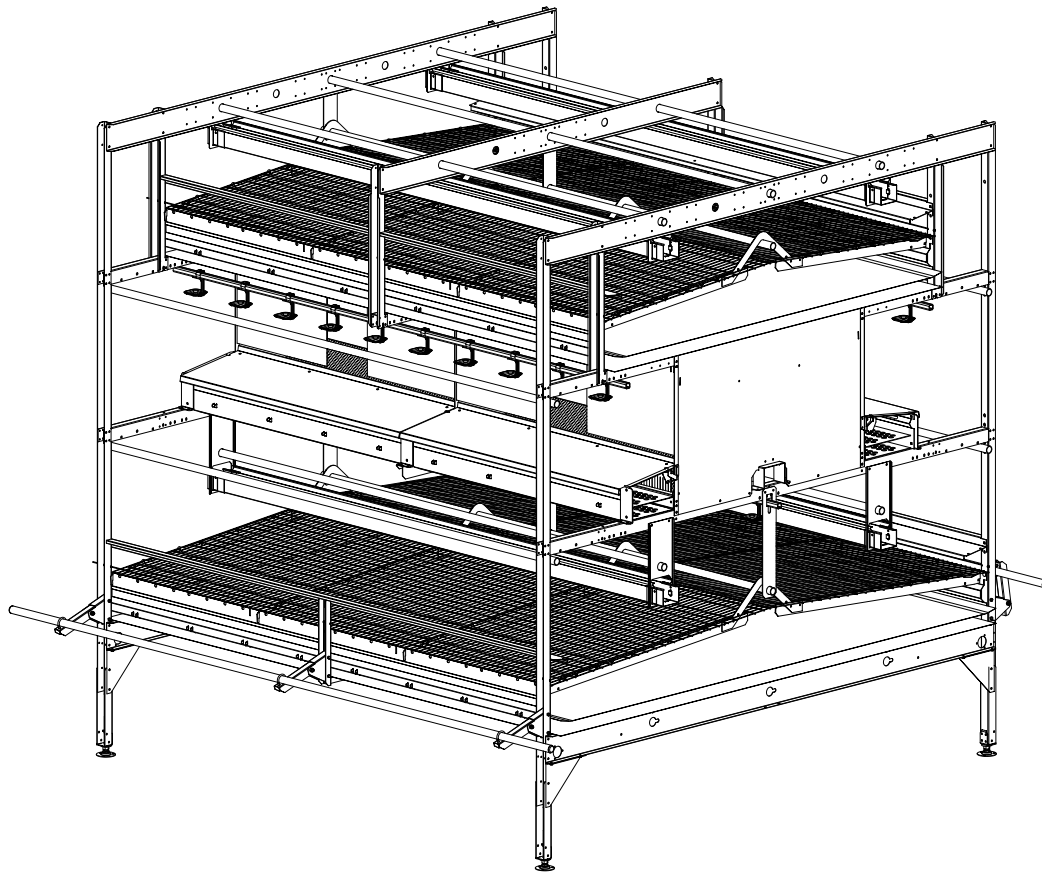
- › Raccomandata e apprezzata dalle principali catene di distribuzione
- › Sviluppata per garantire la libertà di movimento
- › Meno soffocamento, più benessere e produttività per le galline perché non restano nel nido
- › Alto livello di produzione
- › Sistema di chiusura dei nidi per ridurre il numero di uova sporche o rotte
- › Personalizzabile con l'aggiunta di mangiatoie e posatoi
- › Componenti e protezioni di alta qualità e resistenza
- › Facile da ispezionare

PLUS

- › Recommended and appreciated by the main egg retailers and distribution chains
- › Developed to guarantee freedom of movement
- › Less mortality, less sickness and more productivity for the hens
- › High levels of production
- › Clean nests and eggs due to automatic opening and closing system
- › Customizable adding feed troughs and perches
- › High quality components with superior protection against corrosion
- › Easy inspection

AS S250

Aviary System for Layers



Contact your Tecno representative or visit poultryequipment.com for more information.