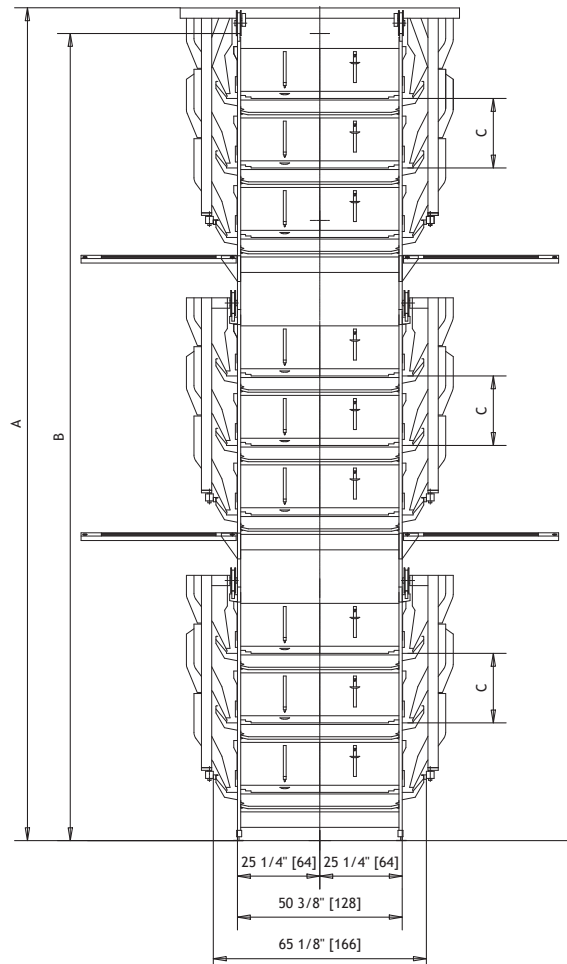
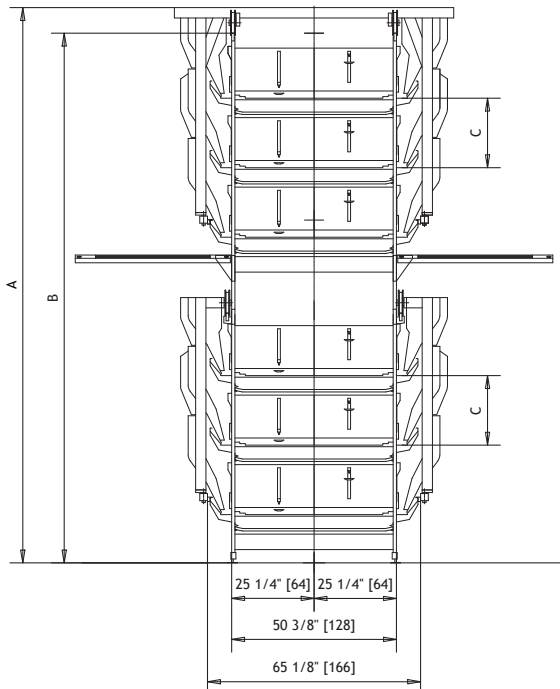
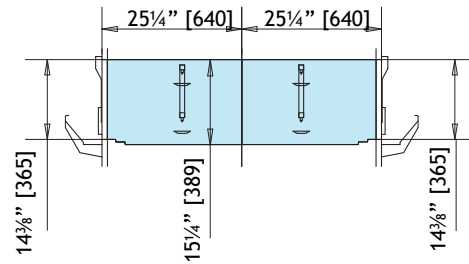
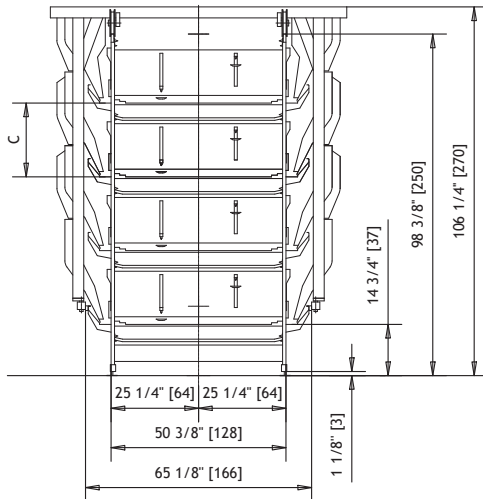


IDEAL PLUS

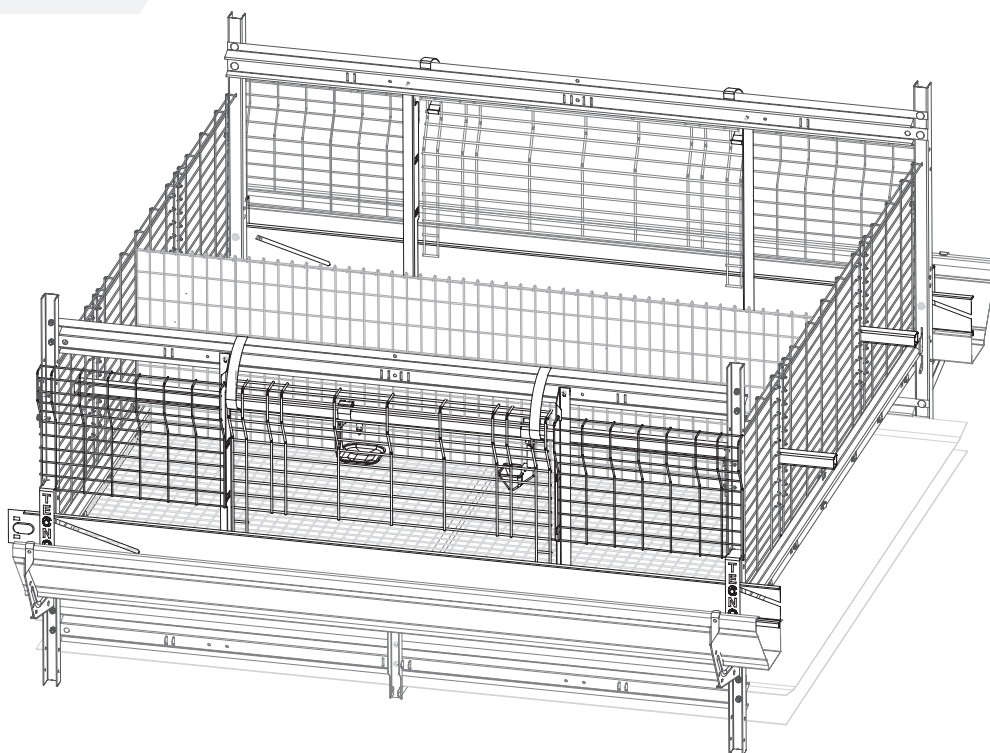
Conventional Rearing System



- A** = Cages height with feeding **trolley**
- B** = Cages height with **chain** feeding
- C** = Tier distance:
 - 21 1/4" [540 mm] without drying manure system
 - 23 1/4" [590 mm] with drying manure system

IDEAL PLUS

Conventional Rearing



IDEAL PLUS	BATTERY HEIGHT			
	WITH DRYING SYSTEM		WITHOUT DRYING SYSTEM	
	Tier distance 23 $\frac{3}{4}$ " [590] (C)		Tier distance 21 $\frac{1}{4}$ " [540] (C)	
Width 65 $\frac{7}{8}$ " [1655 mm]	FLAT CHAIN (B)	TROLLEY (A)	FLAT CHAIN (B)	TROLLEY (A)
3 Tiers	85,04 [2160]	92,84 [2358]	83,08 [2110]	90,87 [2308]
4 Tiers	108,27 [2750]	116,07 [2948]	104,34 [2650]	112,13 [2848]
5 Tiers	131,50 [3340]	139,30 [3538]	125,60 [3190]	133,39 [3388]
6 Tiers	154,73 [3930]	162,52 [4128]	146,86 [3730]	154,65 [3928]
7 Tiers	177,96 [4520]	185,75 [4718]	168,12 [4270]	175,91 [4468]
6 Tiers + walkway (3+3)	171,19 [4348]	176,26 [4477]	159,14 [4042]	166,93 [4240]
7 Tiers + walkway (4+3)	194,41 [4938]	199,49 [5067]	180,40 [4582]	188,19 [4780]
8 Tiers + walkway (4+4)	217,64 [5528]	222,72 [5657]	201,66 [5122]	209,45 [5320]
9 Tiers + walkway (5+4)	240,87 [6118]	245,95 [6247]	222,92 [5662]	230,71 [5860]
9 Tiers + 2 walkways (3+3+3)	261,54 [6643]	266,62 [6772]	234,73 [5962]	239,77 [6090]



Scan the QR code to find more.

Contact your Tecno representative or visit our website for more information.

poultryequipment.com